

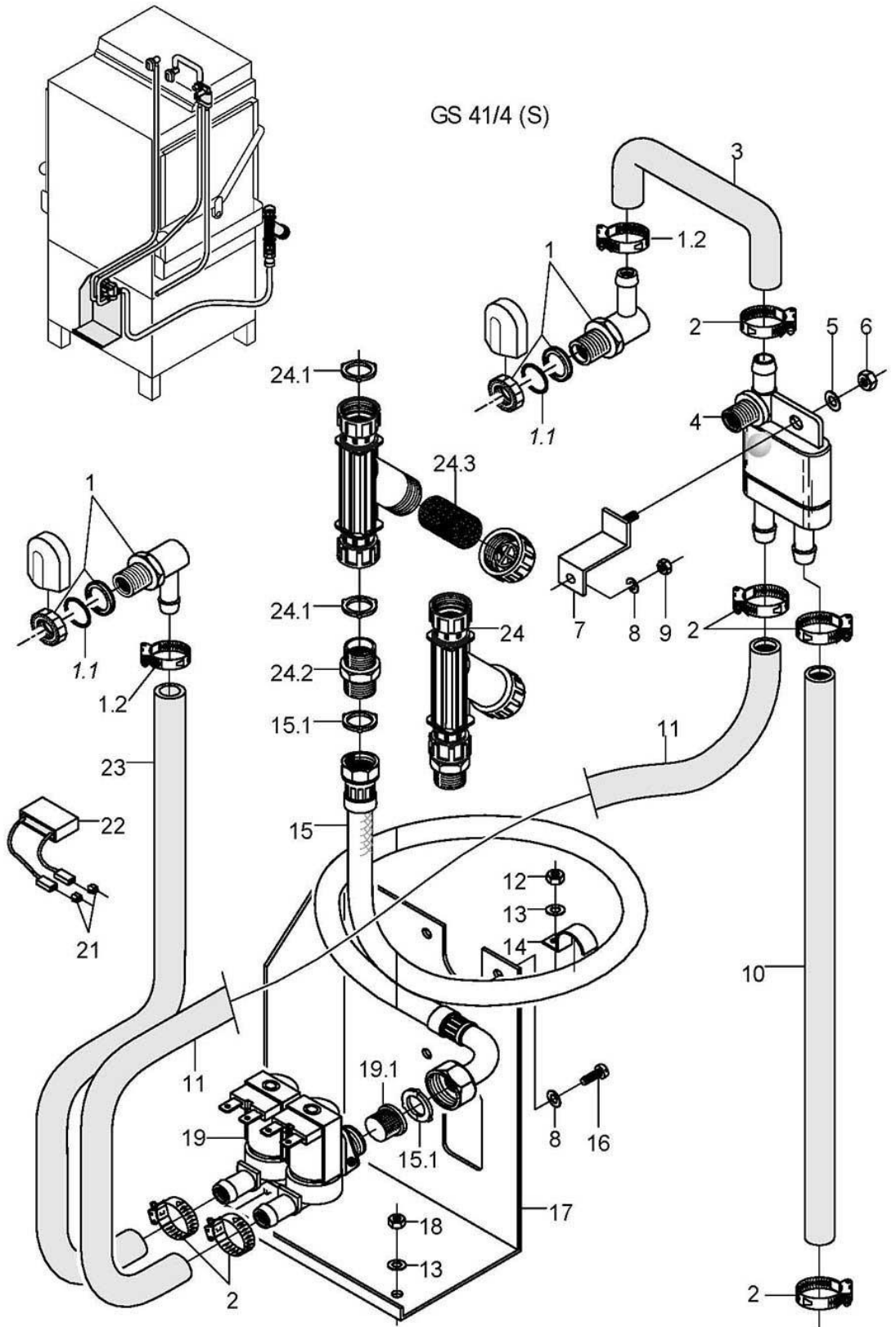
winterhalter

Spare parts list

GS 41/4; GS 41/4S

Contents

Water inlet	Page 1 - 2
Water drainage and tank heating	Page 3 - 4
Mediamat	Page 5 - 6
Wash system I	Page 7 - 8
Wash system II	Page 9 - 10
Rinse I (pressure boiler)	Page 11 - 12
Rinsing II (AquaMatik)	Page 13 - 14
Rinsing III (AquaMatik)	Page 15 - 16
Rinsing IV	Page 17 - 18
Dosage	Page 19 - 20
Chassis, container and panelling	Page 21 - 22
Door	Page 23 - 24
Electrical parts I	Page 25 - 26
Electrical parts II	Page 27 - 28
Glass washing kit (Option)	Page 29 - 30



61005832-00

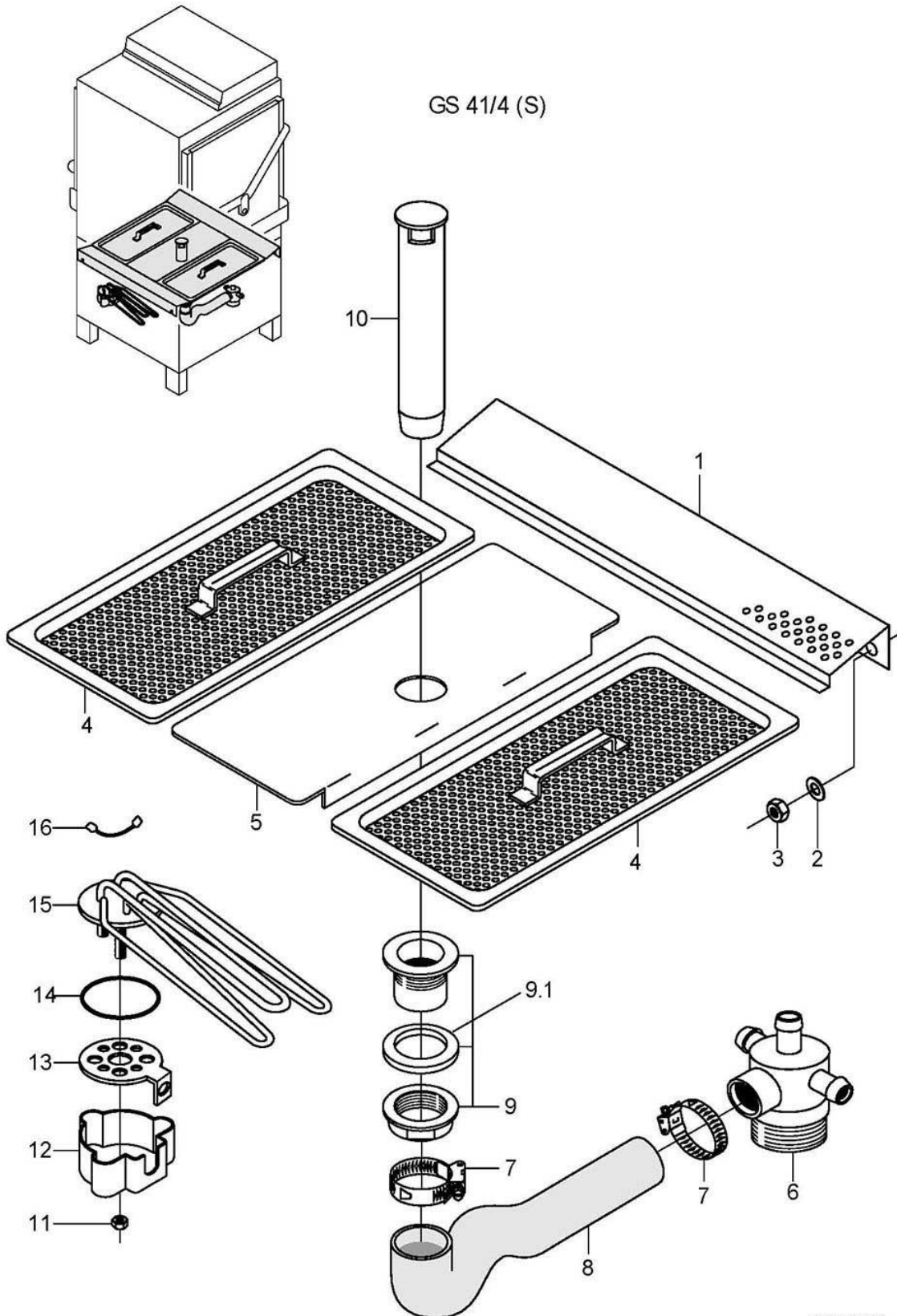
GS 41/4; GS 41/4S

Water inlet

Item.	Designation	Parts no.:	Pc.	Notes
1	Water inlet, 3-part set	55 31 007		incl. item 1.1 - 1.2
1.1	Gasket; D21 X D28 X 2,0	27 09 011		replaced by 55 31 007
1.1	Gasket; D20,5 X D28,5 X 2,0	27 01 002		replaced by 55 31 007
1.1	O-ring; 20 X 3	27 07 031		
1.2	Hose clamp; D12-22 X 9	28 02 105		
2	Hose clamp; D12-22 X 9	28 02 105		
3	Hose elbow; DN13 X 4,0	40 03 052		
4	Reverse suction preventer, top; PN6 BEI 60 GRAD C	35 01 193		
5	Washer; D6,4 X D12,5 X 1,6	22 01 302		
6	Hexagonal nut; M6	21 01 304		
7	Elbow	55 04 054		
8	Washer; D4,3 X D8 X 0,5	22 02 302		
9	Hexagonal nut; M4	21 01 302		
10	Reinforced hose; DN13 X 3,5	40 02 002		1400 mm; "By-the-metre" goods
11	Hose elbow; DN12,5 X 4,0	40 03 051		Pressure boiler
11	Hose elbow; DN13 X 4,0	40 03 052		AquaMatik
12	Hexagonal nut; M5 SELBSTSICHERND	21 05 302		
13	Washer; D5,3 X D10 X 1,0	22 01 300		
14	Bracket; 1,5 X 15 X 57	55 25 017		
15	Metal hose; DN13 X 2000; G3/4"	29 01 321		incl. item 15.1
15.1	Gasket; D16 X D24 X 3,0	80002241	2	
16	Raised head screw; M4 X 8	20 10 310		
17	Bracket; 1,5 X 207 X 261,5	61000626		
18	Hexagonal nut; M5	21 01 303		
19	Double solenoid valve; 220-240V/50-60HZ	31 06 182		incl. item 19.1
19	Double solenoid valve; 180-220V; 50-60HZ	31 06 200		incl. item 19.1
19.1	Solenoid valve filter	31 06 186		
21	Flat plug; 6,3 X 0,8	31 12 018	2	only with Aquamatik; parallel to item 12 connect
22	RC element; 0,15 MICRO F; 3,3 KOHM	31 13 114		only with Aquamatik; parallel to item 12 connect
23	Hose bend; DN12,5 X 4,0	40 03 050		
24	Dirt trap; 150 µM	80002153		incl. item 24.1 - 24.3
24.1	Gasket; D16 X D24 X 3,0	80002241	2	
24.2	Double nipple; G 3/4" X 40; SW30	80002167		
24.3	Strainer; D27 X 67 X 150µM	80002728		
o.P.	Extention for metal hose; DN15 X 1000 MM; G3/4"	29 01 307		Additional equipment
o.P.	Gasket; D16 X D24 X 3,0	80002241		Additional equipment

items 3-10 not for machines with pressureless boiler

GS 41/4 (S)

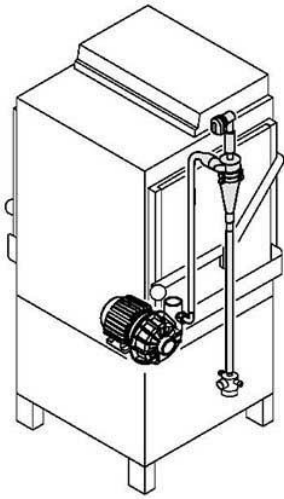


61005833-00

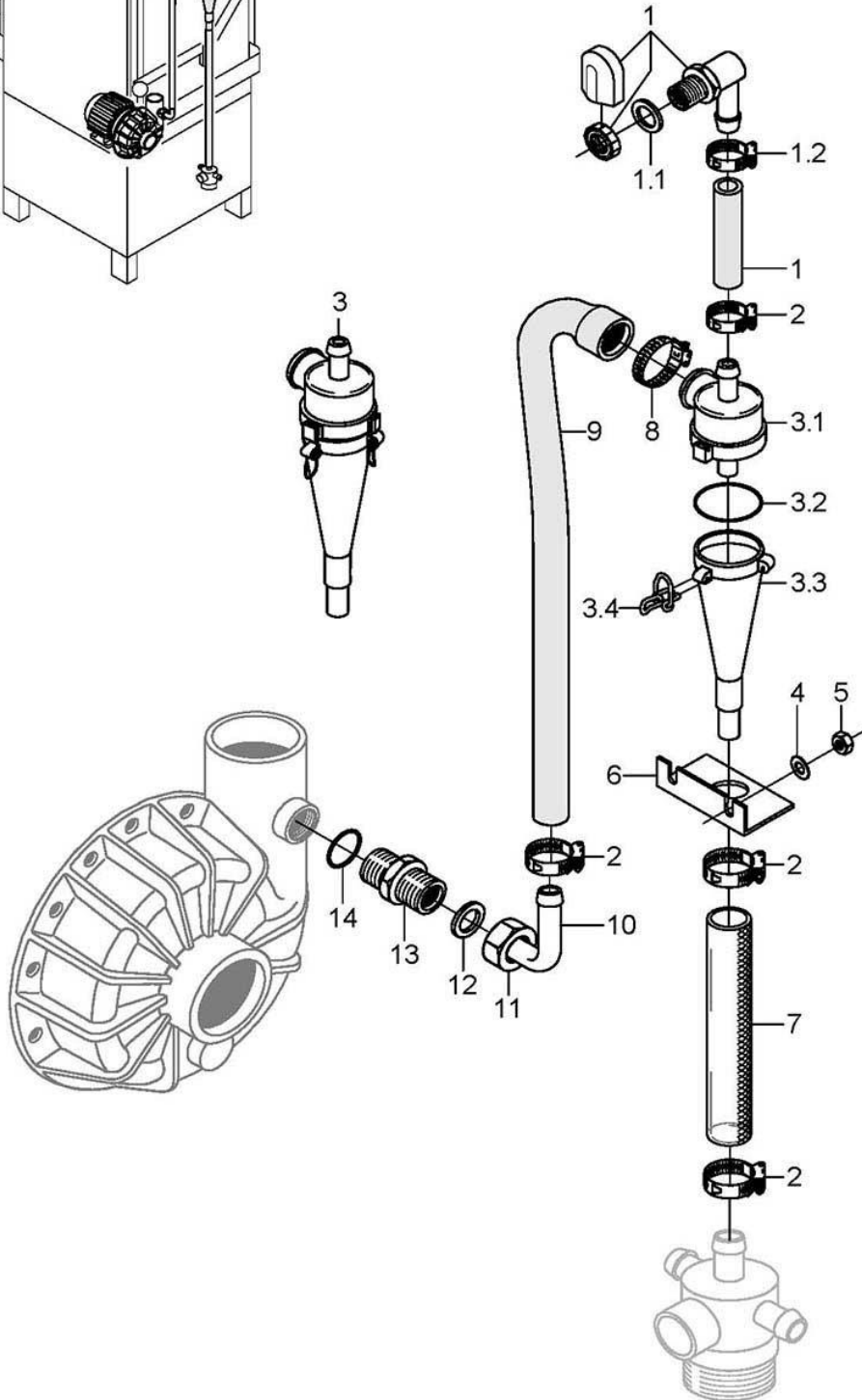
GS 41/4; GS 41/4S

Water drainage and tank heating

Item.	Designation	Parts no.:	Pc.	Notes
1	Support plate; 1,25 X 122,5 X 595	61003995	2	
2	Washer; D5,3 X D12 X 0,8	22 02 313		
3	Hexagonal nut; M5 SELBSTSICHERND	21 05 302		
4	Scrap tray	61003085	2	
5	Support for surface strainer; 1,5 X 189 X 509	61002741		
6	Mediamat drain; G 1 1/2"; D40	35 01 080		
7	Hose clamp; D32-52 X 12	28 02 110		
8	Syphon; DN37/39 X 4;130,5 X435	61002608		
9	Stand pipe bottom part; G 1 1/4" X 43	61006592		
10	Standpipe; ÜBERLAUFHÖHE 185	61004192		
11	Hexagonal nut; M5	21 01 203		
12	Element cover; 50 X D67 X 89,5	31 03 014		
13	Heating element flange; 1,5 X 62 X 113,5; D20	31 03 067		
14	O-ring; 43 X 7,0	27 07 088		
15	Heating element 6,0kW; 230V/400V/3	31 03 025		
15	Heating element 6,0kW; 240V/420V/3	31 03 042		
15	Heating element 6,0kW; 200V/346V/3	31 03 045		
16	Star bridge; 2,5QMM; 90 LG	31 23 088		



GS 41/4 (S)

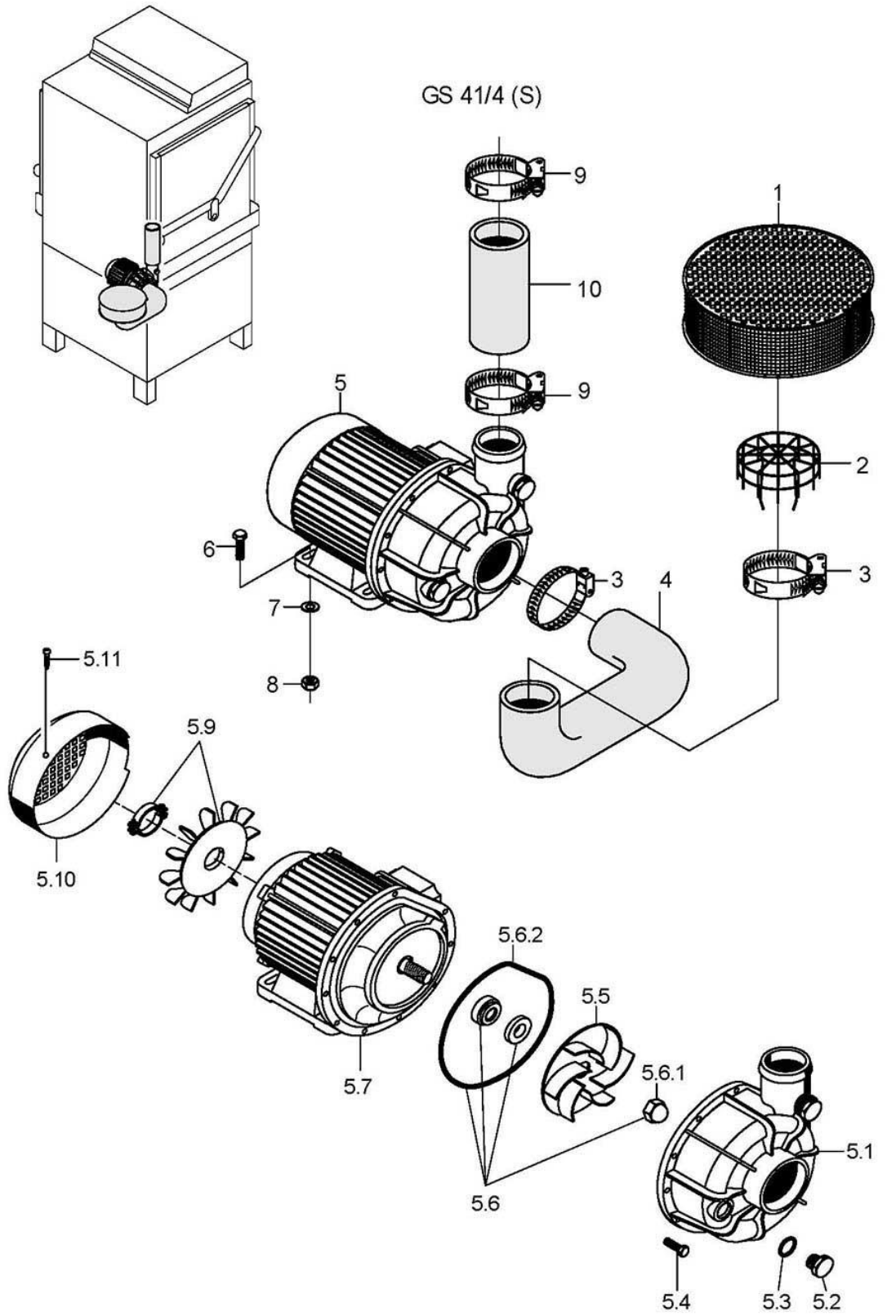


61005834-00

GS 41/4; GS 41/4S

Mediamat

Item.	Designation	Parts no.:	Pc.	Notes
1	Mediamat inlet set cpl.	55 31 001		incl. item 1.1 - 1.2
1.1	Gasket; D21 X D28 X 2,0	27 09 011		replaced by 55 31 001
1.1	Gasket; D20,5 X D28,5 X 2,0	27 01 002		replaced by 55 31 001
1.1	O-ring; 20 X 3	27 07 031		
1.2	Hose clamp; D20-30 X 12	28 02 109		
2	Hose clamp; D20-30 X 12	28 02 109		
3	Mediamat	55 27 040		incl. item 3.1 – 3.4
3.1	Mediamat top section; ZULAUF D30; XX LG	35 01 124		
3.2	O-ring; 51 X 3	27 07 043		
3.3	Accelerator; D75 X 169 X D4,3	35 01 035		
3.4	Wash arm end piece clip; D2,0	28 04 041		
4	Washer; D5,3 X D12 X 0,8	22 02 313		
5	Hexagonal nut; M5 SELBSTSICHERND	21 05 302		
6	Support for mediamat; 1,5 X 50 X 75	61000658		
7	Industrial hose; DN19,4 X 3,5	40 01 016		350 mm; "By-the-metre" goods
8	Hose clamp; D32-52 X 12	28 02 110		
9	Reducing elbow; DN16 X DN30; 90 X 550	61002390		
10	Mediamat connection elbow, D17; 90GRAD	29 06 524		
11	Union nut; G 3/4" X D20,5; SW30	29 07 203		
12	Gasket; D19,5 X D24 X 1,5	27 09 010		
13	Mediamat connection nipple; G 1/2" X G 3/4" X 32	30 11 502		
14	O-ring; 20 X 3,5	27 07 040		



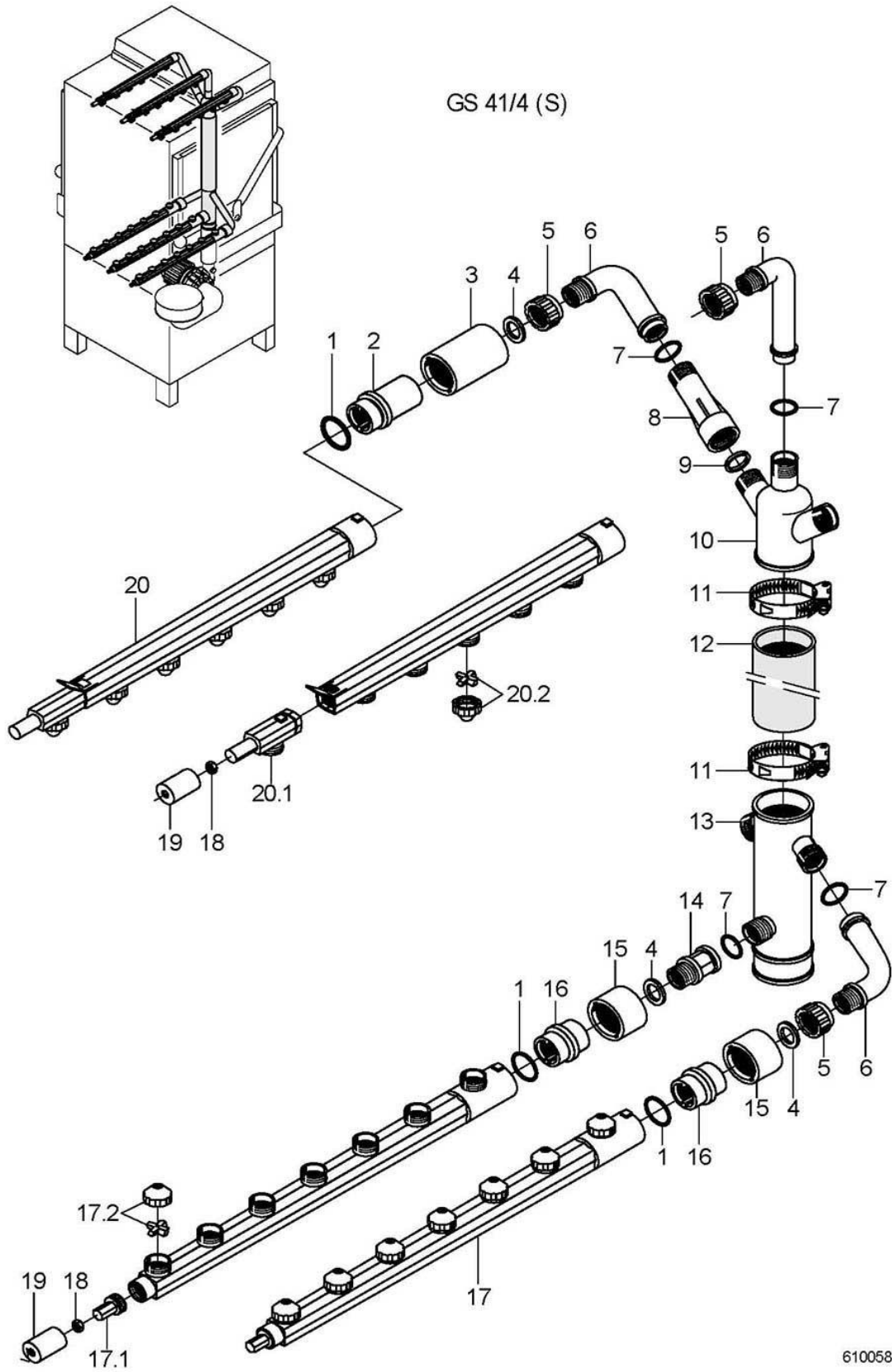
61005835-00

GS 41/4; GS 41/4S

Wash system I

Item.	Designation	Parts no.:	Pc.	Notes
1	Pump sieve; D226 X 72	55 13 009		
2	Suction sieve; D85 X 68 X D2	61002500		
3	Hose clamp; D62-82 X 12	28 02 137		
4	Hose elbow; DN62 X 8,0	40 03 017		
5	Pump 1.1 kW 2/1; 230V/400V/3/50HZ; IP44	31 02 263		incl. item 5.1 - 5.11
5	Pump 1.1 kW 2/1; 230V/400V/3/60HZ; IP44	31 02 267		incl. item 5.1 - 5.11
5	Pump 1,1 kW 2/1; 230V/1/50HZ; IP44	31 02 265		incl. item 5.1 - 5.11
5	Pump 1,1 kW 2/1; 220V/1/60HZ	31 02 271		incl. item 5.1 - 5.11
5	Pump 1.1 kW 2/1; 200V/3/50HZ; IP44	31 02 302		incl. item 5.1 - 5.11
5	Pump 1.1 kW 2/1; 200V/3/60HZ	31 02 303		incl. item 5.1 - 5.11
5.1	Pump housing	31 02 204		
5.2	Dummy plug; G 1/2" X 20,5	35 01 108		
5.3	O-ring; 20 X 3,5	27 07 040		
5.4	Hexagon screw; M4 X 25; 8.8	20 01 020		
5.5	Pump impeller; D111	31 02 273		50 Hz
5.5	Pump impeller; D96	31 02 274		60 Hz
5.6	Gasket set; 1,1/1,7/1,85/0,73 KW	80002670		incl. item 5.6.1 - 5.6.2
5.6.1	Cap nut; M8 SELBSTSICHERND	21 10 305		
5.6.2	O-ring; 158,35 X 3,53	31 02 209		
5.7	Pump cover	31 02 208		
5.9	Fan blade; 1,1 / 1,5 KW	31 02 211		
5.10	Fan hood; 1,1 / 1,5 KW	31 02 212		
5.11	Raised head screw; M4 X 8	20 10 310		
6	Hexagon screw; M8 X 20; A70	20 01 312		
7	Washer; D8,4 X D17 X 1,6	22 01 303		
8	Hexagonal nut; M8	21 01 305		
9	Hose clamp; D47-67 X 12	28 02 115		
10	Industrial hose; DN50 X 6,0	40 02 006		215 mm; "By-the-metre" goods

GS 41/4 (S)



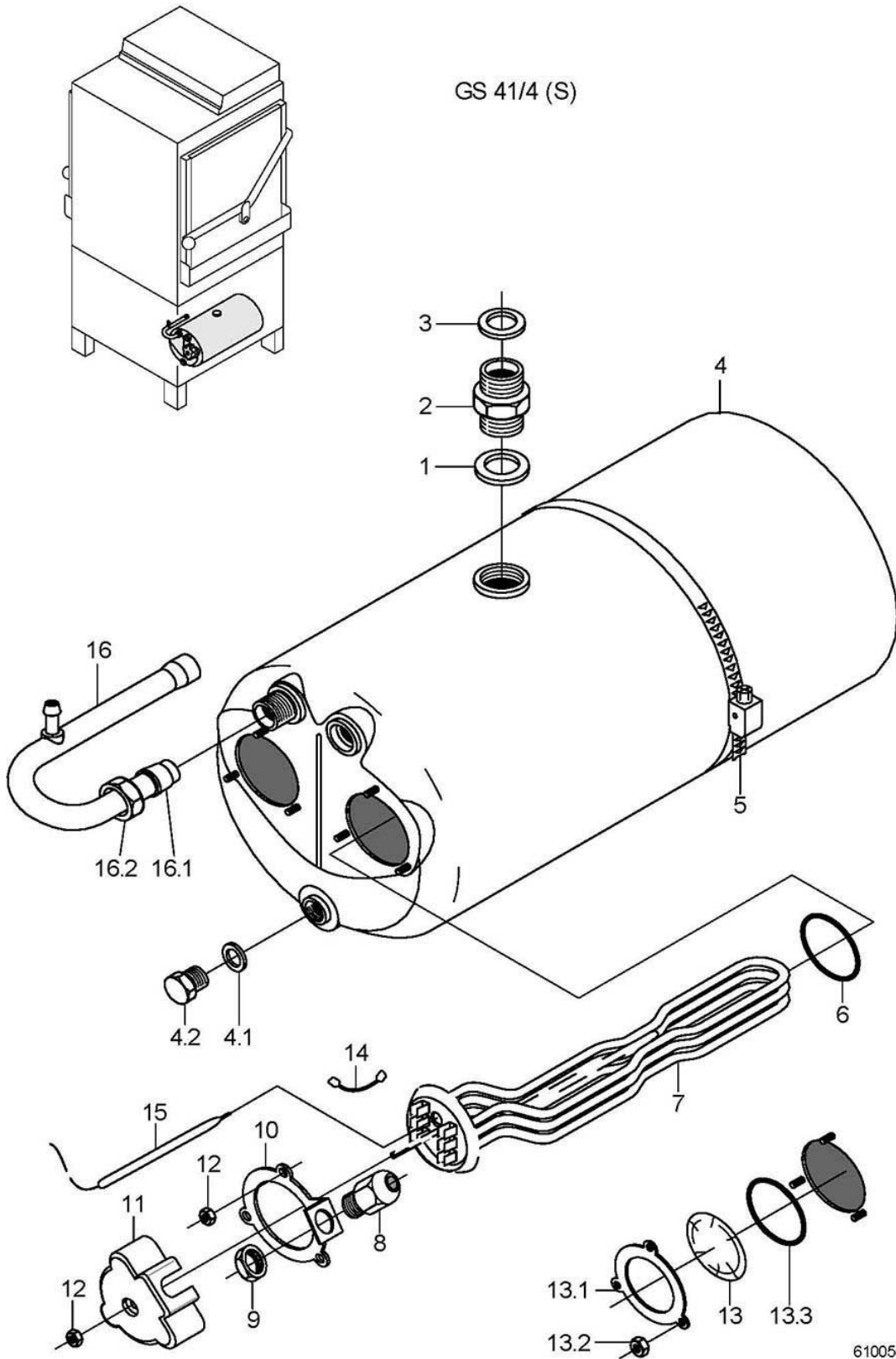
61005836-00

GS 41/4; GS 41/4S

Wash system II

Item.	Designation	Parts no.:	Pc.	Notes
1	O-ring; 28 X 2,5	27 07 049	6	
2	Locking nut; D38 X 69,5; G 3/4"	61004060	3	
3	Locking ring; D49 X 70	61002024	3	
4	Gasket; D26 X D36 X 2,0	27 01 003	6	
5	Cap nut; G 1 1/4" X 24	35 01 004	5	
6	Angle for wash manifold; G 3/4"; 55,5 X 125	35 01 005	5	
7	O-ring; 24 X 3,0	27 07 087	6	
8	Extension; G 1 1/4" X 131	35 01 003	2	
9	Gasket; D30 X D39 X 2,0	27 02 001	2	
10	Wash manifold	35 01 002		
11	Hose clamp; D47-67 X 12	28 02 115		
12	Industrial hose; DN50 X 6,0	40 02 006		190 mm; "By-the-metre" goods
13	Wash manifold bottom section	35 01 018		
14	Double nipple; G 3/4" X 40,5; SW32	35 01 019		
15	Locking ring; D49 X 28	61002023	3	
16	Locking nut; D38 X 28; G 3/4"	61004059	3	
17	Wash arm bottom cpl.; 7 DÜSEN; 592 LG	61001965	3	incl. item 17.1 – 17.2
17.1	Wash arm plug; G 1/2" X 37	35 01 210		
17.2	Jet cpl.	60002465	7	
18	Hexagonal nut; M4 SELBSTSICHERND	21 05 300		
19	Guide for washarm; D28 X 30	61002263		
20	Wash arm cpl. Top; 6 DÜSEN; 547,5 LG	61002557		incl. item 20.1 - 20.2
20.1	End piece - sloping; 1DÜSE; 117 LG	61002084		
20.2	Jet cpl.	60002465	6	

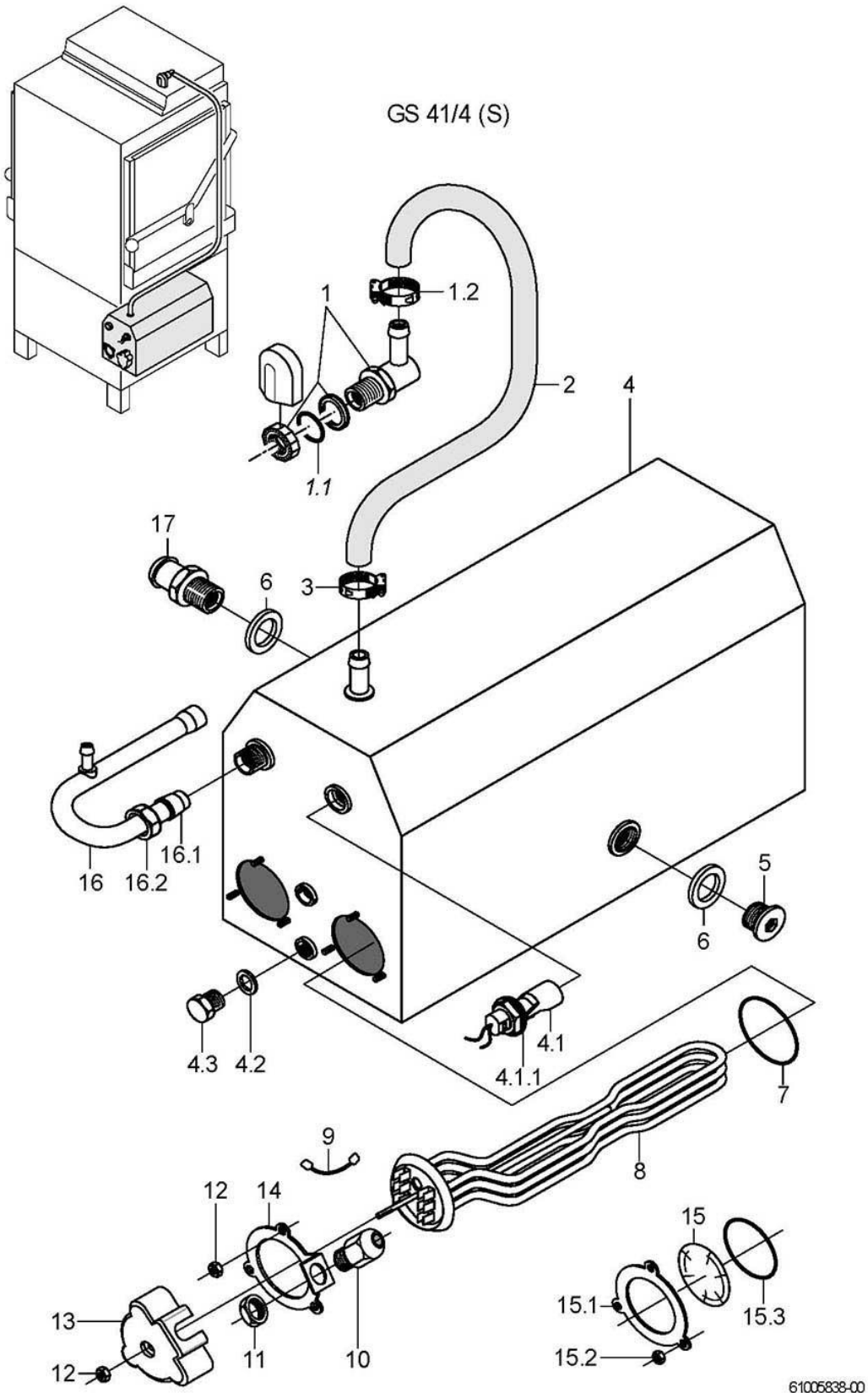
GS 41/4 (S)



61005837-00

GS 41/4; GS 41/4S**Rinse I (pressure boiler)**

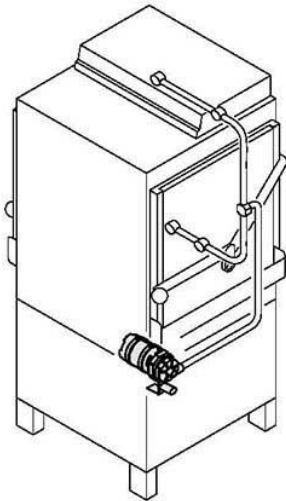
Item.	Designation	Parts no.:	Pc.	Notes
1	Gasket; D21 X D28 X 2,0	27 09 011		
2	Reducing nipple; G 1/2" X G 3/4"; SW27	61003430		
3	Gasket; D19,5 X D24 X 1,5	27 09 010		
4	Boiler cpl., 2-hole; 12 KW; 480 LG	55 12 032		incl. item 4.1 - 4.2
4.1	Gasket; D10 X D18 X 1,5	27 03 003		
4.2	Hexagon screw; M10 X 16; A70	20 01 352		
5	Hose clamp; D50-215 X 12	28 02 126		
6	O-ring; 43 X 7,0	27 07 088		
7	Heating element cranked 6.0kW; 230V/400V/3	31 03 017		
7	Heating element cranked 6.0kW; 240V/420V/3	31 03 043		
7	Heating element cranked 6.0kW; 200V/346V/3	31 03 046		
7	Heating element cranked 9.0kW; 230V/400V/3	31 03 018		
7	Heating element cranked 9.0kW; 240V/420V/3	31 03 057		
8	Cable gland; PG13,5; 6-12 MM; IP68	31 10 040		
9	Hexagonal nut; PG13,5	31 10 041		
10	Clamping plate; D43 X D80 X 4,0	55 19 018		
11	Element cover; 50 X D67 X 89,5	31 03 014		
12	Hexagonal nut; M5	21 01 203		
13	Blind flange	60002787		incl. item 13.1 - 13.3
13.1	Locking washer; D43 X D80 X 4,0	01 17 003		
13.2	Hexagonal nut; M5	21 01 203		
13.3	O-ring; 43 X 7,0	27 07 088		
14	Star bridge; 2,5QMM; 90 LG	31 23 088		
15	Safety thermostat; 160 GRAD C -12K "AUS"	31 25 030		
16	Boiler inlet elbow, cpl.	55 09 054		incl. item 16.1 - 16.2
16.1	Cutting ring; D12 X 10	29 07 300		
16.2	Union nut; G 1/2" X D12,2; SW24	29 07 201		
o.P.	Conversion kit 12kw boiler	55 28 203		



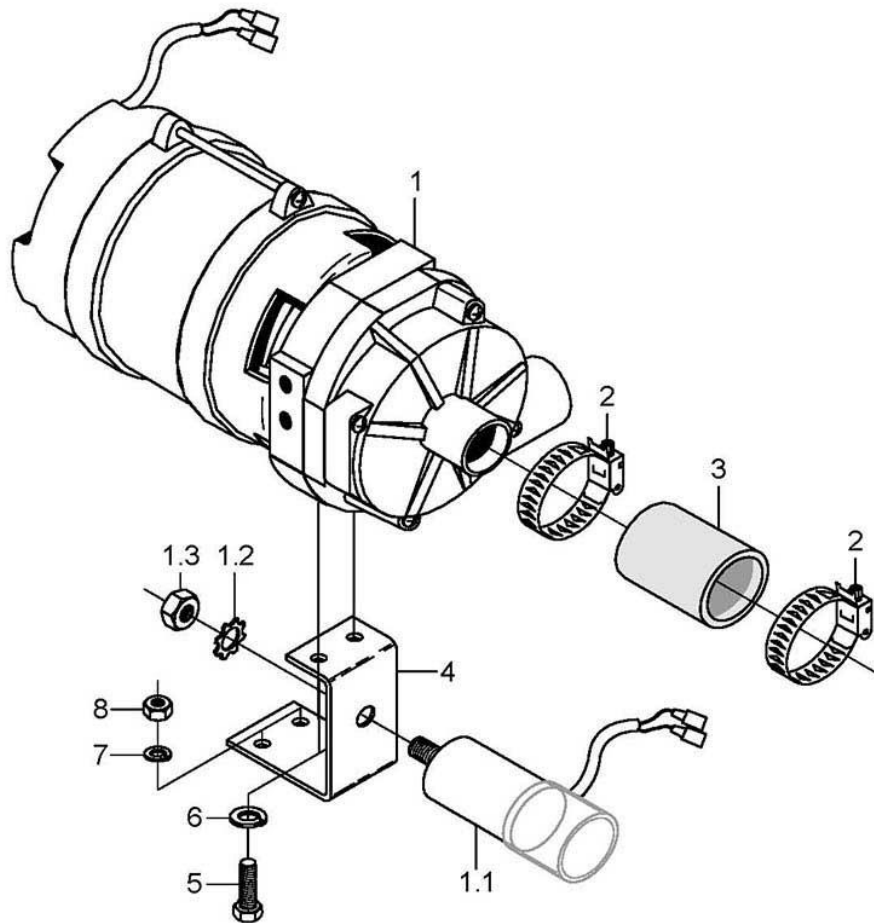
61005838-00

GS 41/4; GS 41/4S**Rinsing II (AquaMatik)**

Item.	Designation	Parts no.:	Pc.	Notes
1	Water inlet, 3-part set	55 31 007		incl. item 1.1 - 1.2
1.1	Gasket; D21 X D28 X 2,0	27 09 011		replaced by 55 31 007
1.1	Gasket; D20,5 X D28,5 X 2,0	27 01 002		replaced by 55 31 007
1.1	O-ring; 20 X 3	27 07 031		
1.2	Hose clamp; D12-22 X 9	28 02 105		
2	Hose elbow; DN12,5 X 4,0	40 03 051		
3	Hose clamp; D12-22 X 9	28 02 105		
4	Pressureless boiler cpl.	80002128		
4.1	Floating switch installation set	55 28 255		
4.1.1	Rubber seal; D27 X D20 X 14	31 26 036		
4.2	Gasket; D10 X D18 X 1,5	27 03 003		
4.3	Hexagon screw; M10 X 16; A70	20 01 352		
5	Screw plug; G 1/2"	30 08 303		
6	Gasket; D21 X D28 X 2,0	27 09 011		
7	O-ring; 43 X 7,0	27 07 088		
8	Heating element cranked 6.0kW; 230V/400V/3	31 03 017		
8	Heating element cranked 6.0kW; 240V/420V/3	31 03 043		
8	Heating element cranked 6.0kW; 200V/346V/3	31 03 046		
8	Heating element cranked 9.0kW; 230V/400V/3	31 03 018		
8	Heating element cranked 9.0kW; 240V/420V/3	31 03 057		
9	Star bridge; 2,5QMM; 90 LG	31 23 088		
10	Cable gland; PG13,5; 6-12 MM; IP68	31 10 040		
11	Hexagonal nut; PG13,5	31 10 041		
12	Hexagonal nut; M5	21 01 203		
13	Element cover; 50 X D67 X 89,5	31 03 014		
14	Clamping plate; D43 X D80 X 4,0	55 19 018		
15	Blind flange	60002787		incl. item 15.1 – 15.3
15.1	Locking washer; D43 X D80 X 4,0	01 17 003		
15.2	Hexagonal nut; M5	21 01 203		
15.3	O-ring; 43 X 7,0	27 07 088		
16	Boiler inlet elbow, cpl.	55 09 054		incl. item 16.1 – 16.2
16.1	Cutting ring; D12 X 10	29 07 300		
16.2	Union nut; G 1/2" X D12,2; SW24	29 07 201		
17	Hose nipple; D26 X 41; G 1/2"; SW27	80001403		



GS 41/4 (S)

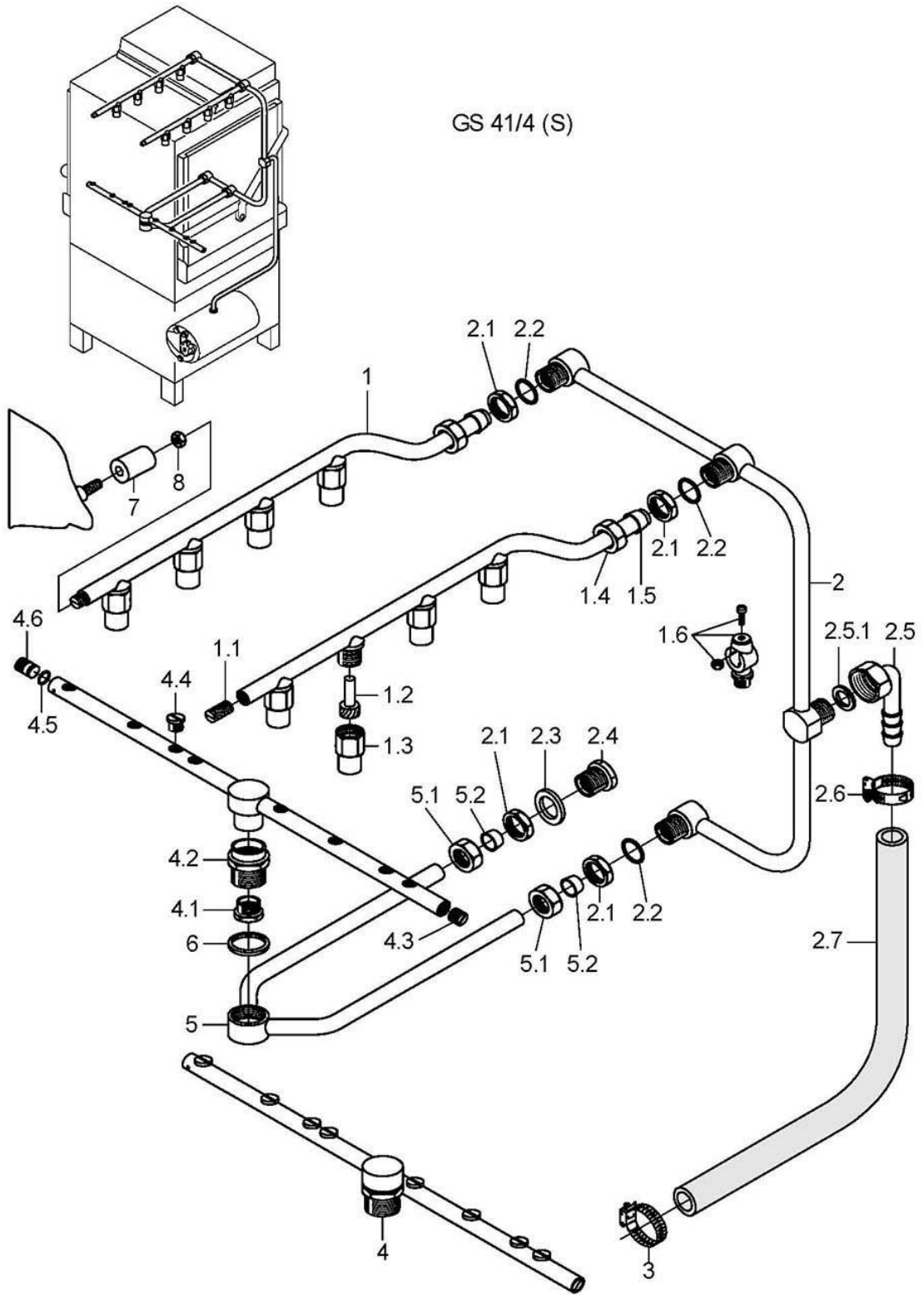


61005839-00

GS 41/4; GS 41/4S**Rinsing III (AquaMatik)**

Item.	Designation	Parts no.:	Pc.	Notes
1	Pump 0.270 kW 8/0; 220/240V/1/50HZ	31 02 477		incl. item 1.1 – 1.3
1	Pump 0.270 kW 8/0; 220/240V/1/60HZ	31 02 445		incl. item 1.1 – 1.3
1	Pump 0.270 kW 8/0; 200V/1/50HZ	31 02 446		incl. item 1.1 – 1.3
1	Pump 0.270 kW 8/0; 200V/1/60HZ	31 02 447		incl. item 1.1 – 1.3
1.1	Capacitor; 5 MIKRO F	31 13 099		
1.2	Spring washer; B8	23 03 301		
1.3	Hexagonal nut; M8	21 01 305		
2	Hose clamp; D24-44 X 12	28 02 309		
3	Reinforced hose; DN25 X 4,5	40 01 038		50 mm; "By-the-metre" goods
4	Pump holder; 2,0 X 45 X 111,57	80001482		
5	Hexagon screw; M6 X 16; A70	20 01 306		
6	Spring washer; B6	23 03 300		
7	Washer; D5,3 X D12 X 0,8 2202313	22 02 213		
8	Hexagonal nut; M5 SELBSTSICHERND	21 05 302		

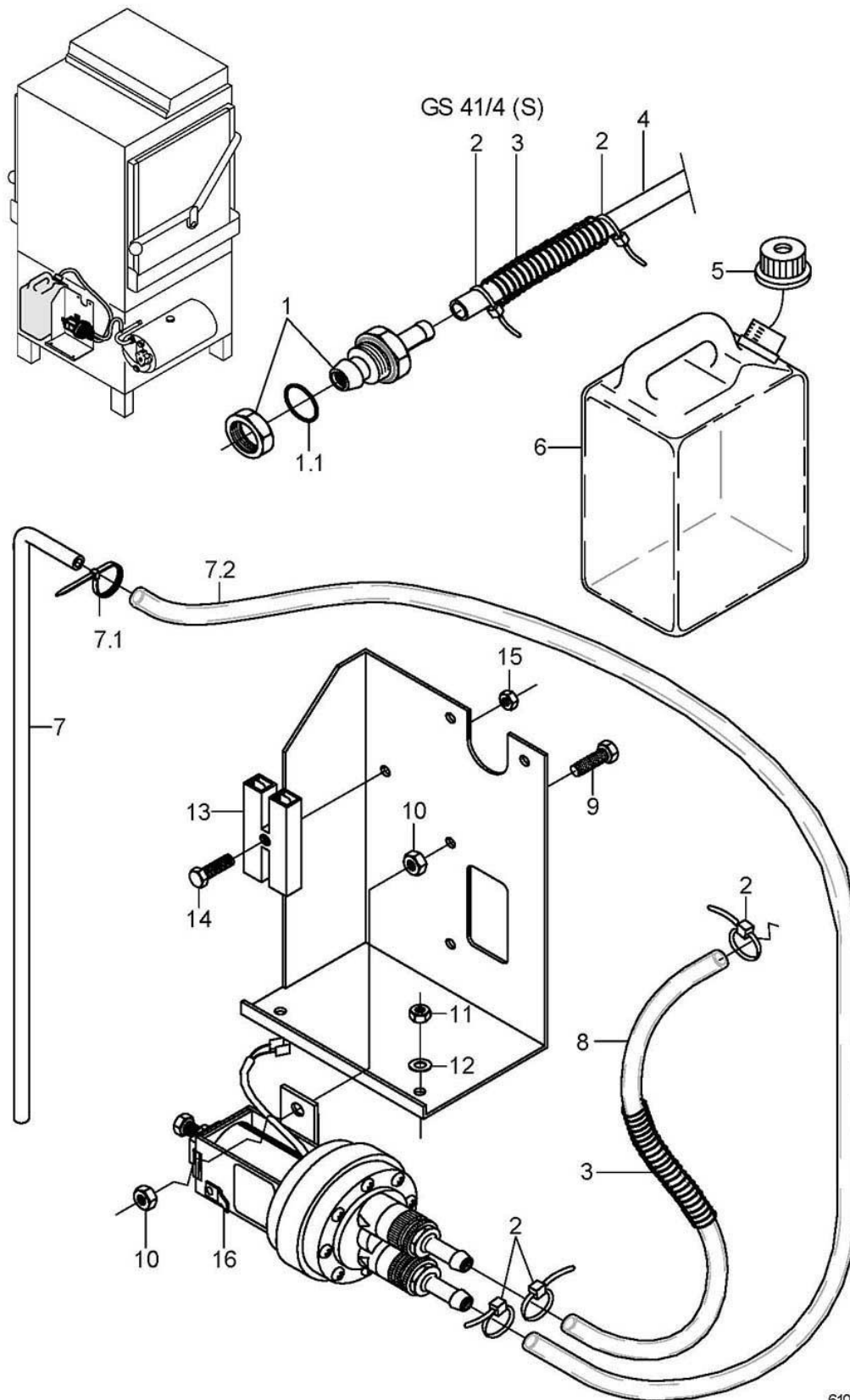
GS 41/4 (S)



61005840-00

GS 41/4; GS 41/4S**Rinsing IV**

Item.	Designation	Parts no.:	Pc.	Notes
1	Rinse pipe cpl.	61004421		incl. item 1.1 - 1.6
1.1	Threaded pin; M9 X 40	20 30 502		
1.2	Spray jet swirl; D8 X 18,8	65002764		
1.3	Spray jet cap; D14,6 X 21	65002765		
1.4	Union nut; G 3/8" X D10,2; SW22	29 07 200		
1.5	Cutting ring; D13 X 10; DN10	29 07 303		
1.6	Jet bottom part; D18 X 36; M11 X 1,0	55 10 008		GS 41/4: to machine no.: 332 001
1.6	Jet bottom part; D18 X 36; M11 X 1,0	55 10 008		GS 41/4S: to machine no.: 12 959
2	Rinse manifold	61004985		incl. item 2.1 - 2.7
2.1	Hexagonal nut; G 3/8" X 5,5; SW22	30 09 200		
2.2	O-ring; 16 X 2,5	27 07 001		
2.3	Gasket; D17 X D24 X 2,0	27 09 009		
2.4	Blind plug; G 3/8" X D24; SW22	61002295		
2.5	Hose nipple, angled; D18	60002474		
2.5.1	Gasket; D16 X D24 X 3,0	80002241		
2.6	Hose clamp; D20-30 X 12	28 02 109		
2.7	Industrial hose; DN13 X 3,5	40 02 035		1000 mm; "By-the-metre" goods
2.7	Reducing elbow; DN17 X DN25; 60 X 800	61004321		
3	Hose clamp; D20-30 X 12	28 02 109		Pressure boiler
3	Hose clamp; D24-44 X 12	28 02 309		AquaMatik
4	Revolving arm; 8 DÜSEN; 530 LG	55 10 091		incl. item 4.1 - 4.6
4.1	Threaded nipple; M14 X 1,0 X 13; SW19	20 19 204		
4.2	Rev. Rinse arm socket; R 3/4" X 24,5; SW30	35 01 161		
4.3	Threaded stud; M11 X 1,0 X 8	29 10 239		
4.4	Flat jet nozzle; 1/16 NPT; SW10	29 10 312		
4.5	O-ring; 7 X 1,5	27 07 014		
4.6	Threaded stud with o-ring; M11 X 1,0 X 14	29 10 240		
5	Rinse arm support	61004444		incl. item 5.1 - 5.2
5.1	Union nut; G 3/8" X D10,2; SW22	29 07 200		
5.2	Cutting ring; D13 X 10; DN10	29 07 303		
6	Gasket; D27 X D34 X 2,0	27 09 025		
7	Guide socket for rinse arm; D28 X 30	61002343		
8	Hexagonal nut; M4 SELBSTSICHERND	21 05 300		



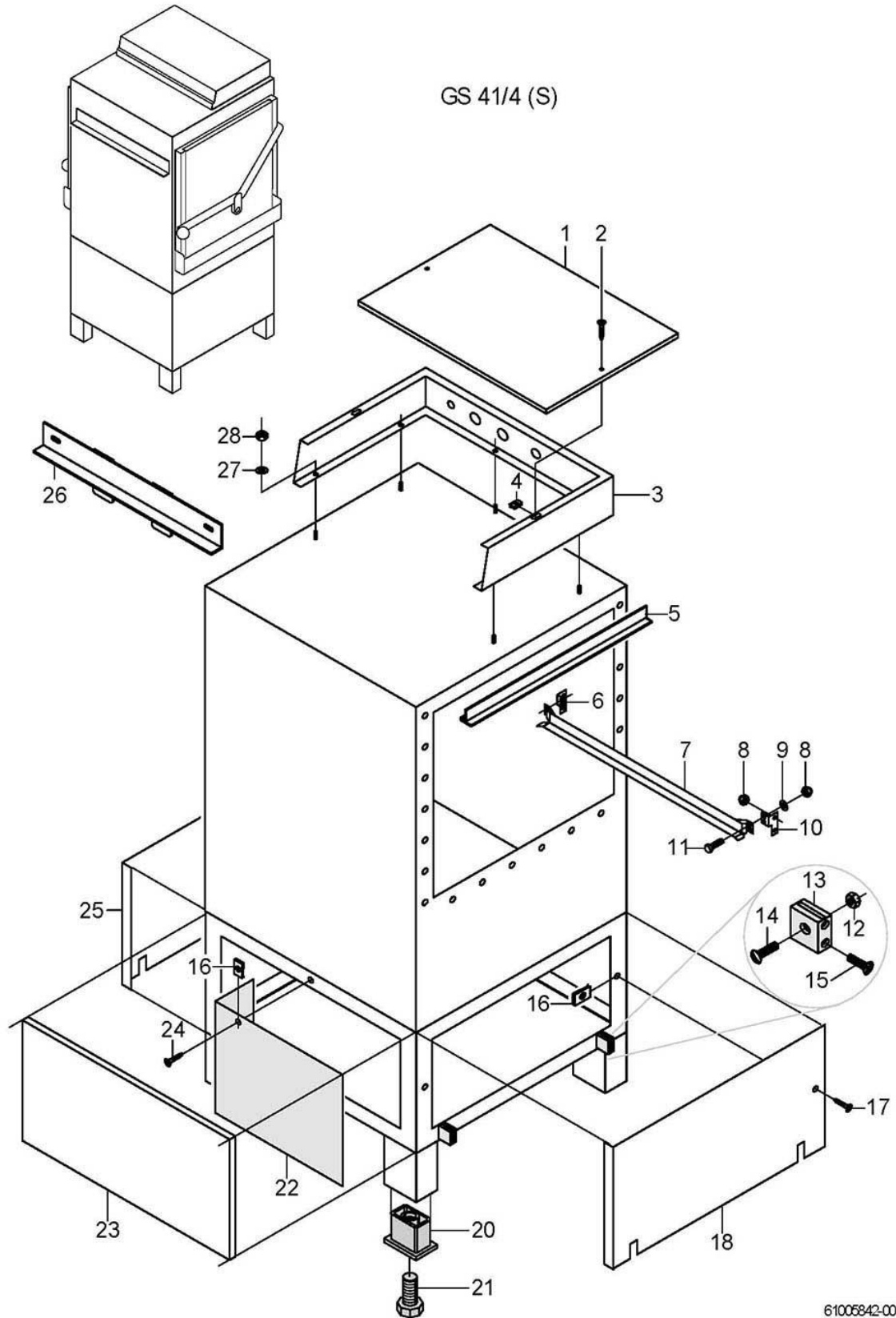
61005841-00

GS 41/4; GS 41/4S

Dosage

Item.	Designation	Parts no.:	Pc.	Notes
1	Detergent inlet	55 25 040		incl. item 1.1
1.1	O-ring; 16 X 2,5	27 07 001		
2	Wire hose clamp; D8,6 X 1	28 02 348		
3	Spring; D0,8 X DI10 X 280	62002419		
4	Hose; DN5 X 1,5	40 01 024		2000 mm; "By-the-metre" goods
5	Locking cap blue	35 02 023		
6	Container; 3 LITER	35 02 004		Additional equipment
7	Suction stick cpl.	55 25 051		incl. item 7.1 – 7.2
7.1	Wire hose clamp; D8,6 X 1	28 02 348		
7.2	Hose; DN5 X 1,5	40 01 024		2500 mm; "By-the-metre" goods
8	Hose; DN5 X 1,5	40 01 024		120 mm; "By-the-metre" goods
9	Hexagon screw; M4 X 12; A70	20 01 316		
10	Hexagonal nut; M4 SELBSTSICHERND	21 05 300		
11	Hexagonal nut; M5	21 01 303		
12	Washer; D5,3 X D10 X 1,0	22 01 300		
13	Coupler piece, insulated; 250V;20AWG;25A;2-POLIG	31 12 021		
14	Countersunk screw; M4 X 12	20 10 312		
15	Hexagonal nut; M4	21 01 302		
16	ELT 10 replacement set	55 28 278		

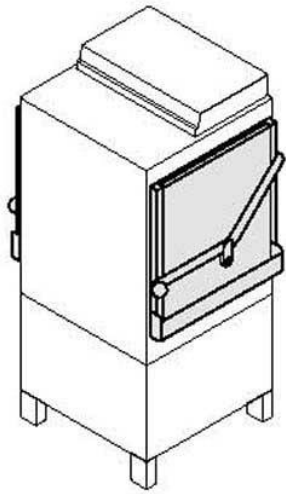
GS 41/4 (S)



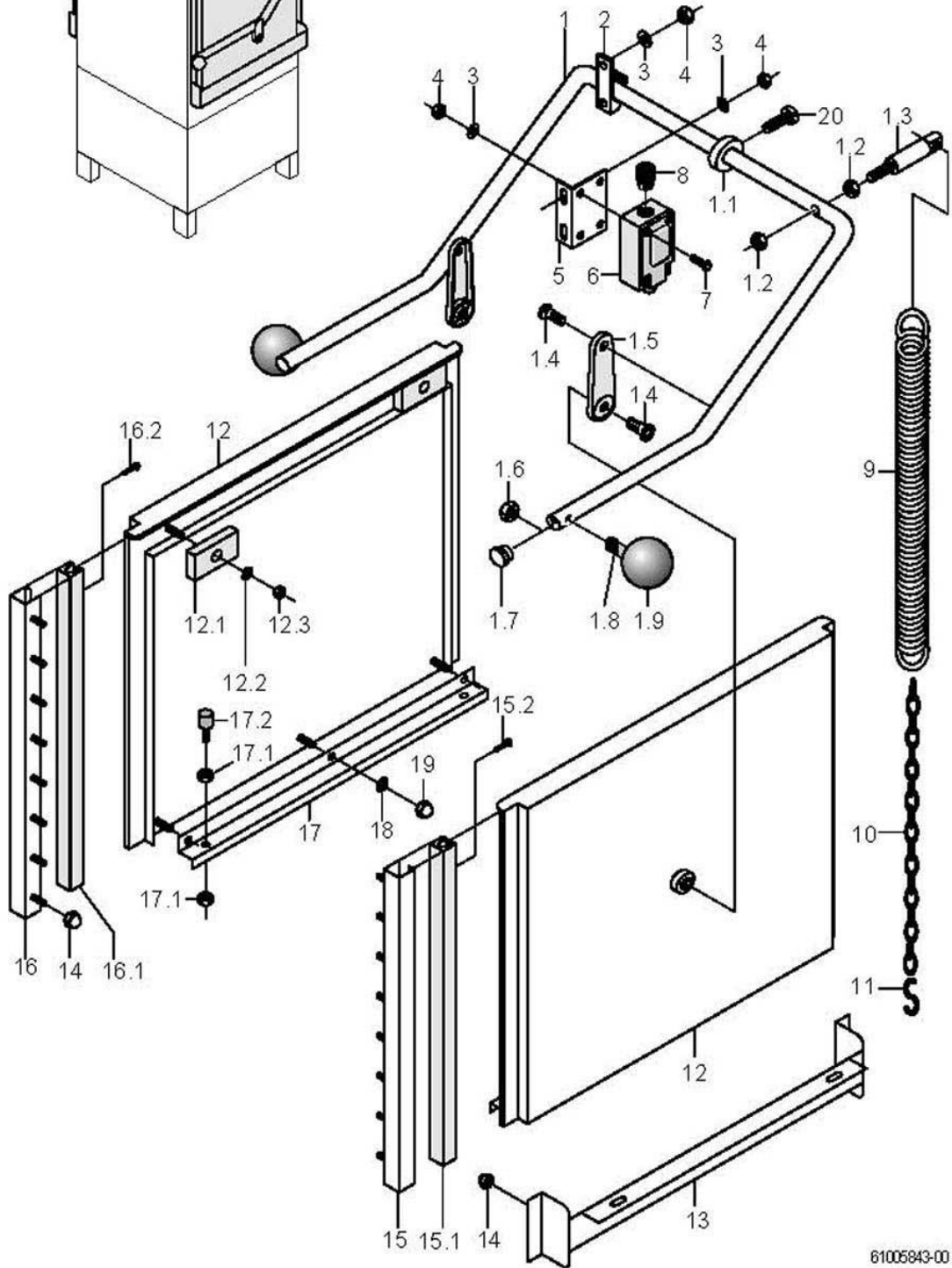
61005842-00

GS 41/4; GS 41/4S**Chassis, container and panelling**

Item.	Designation	Parts no.:	Pc.	Notes
1	Cover for switch box; 0,8 X 384,5 X 547	61002051		
2	Sheet metal screw; ST 3,9 X 19	20 22 302		
3	Switch box housing cpl.; 108 X 385,5 X 520	61002048		
4	Sheet metal nut; B 3,9	21 17 002		
5	Sealing rail; 1,0 X 53 X 533	55 15 147		
6	Bracket left; 1,5 X 53 X 90	55 16 030	2	to machine no.: 10 420
7	Rack guide rear	55 16 014		not für GS 41/4 (S) Corner
7	Rack guide front	55 16 007		not für GS 41/4 (S) Corner
7	Rack guide rear; FÜHRUNG 430	61002509		not für GS 41/4 (S) Corner
7	Rack guide front; FÜHRUNG 430	61002510		not für GS 41/4 (S) Corner
7	Rack carrier GS 41 Corner	61004828		GS 41/4 corner ; 500x500 ; support incl.
7	Rack carrier GS 41 Corner	61004829		GS 41/4 corner ; 500x430 ; support incl.
7	Bracket	61001017		GS 41/4S Corner
8	Cap nut; M5	21 10 303		
9	Washer; D5,3 X D12 X 0,8	22 02 313		
10	Bracket right; 1,5 X 53 X 90	55 16 029	2	to machine no.: 10 420
11	Hexagon screw; M5 X 10; A70	20 01 300		
12	Hexagonal nut; M5	21 01 303		
13	Support; 20 X 7,8 X 27,8	35 01 068		GS 41/4; up to 09/95
13	Support; 20 X 7,8 X 27,8	35 01 068		GS 41/4S
13	Strut support	61003908		GS 41/4; from 10/95
14	Pan head screw; M5 X 16	20 10 224		
15	Pan head screw; M4 X 45	20 10 328		
16	Sheet metal nut; B 3,9	21 17 300		
17	Plate screw; ST 3,9 X 9,5	20 20 307		
18	Panel right; 0,8 X 341 X 641	55 03 047		
20	Threaded insert; G 3/4"; 42 X 62 X 50	35 01 063		
21	Adjustable foot; G 3/4"; 32 X 32 X 100	35 01 064		
21	Foot extension; 50mm; 50 HOCH	80000542	4	
21	Foot extension; 100mm; 100 HOCH	80000546	4	
21	Foot extension; 150mm; 150 HOCH	80000587	4	
21	Foot fixing; D90 X 83	80000640		
22	Inside cover; L 105 X 337 X 2 X 320	35 01 505		
23	Front panel	55 03 041		
23	Front panel	55 03 054		GS 41/4 (S) Corner
24	Sheet metal screw; ST 3,9 X 16	20 20 300		
25	Panel left cpl.; 0,8 X 341 X 641	55 03 048		
26	Support de tuyau; sup.	61002643		GS 41/4 (S) Corner
27	Washer; D6,4 X D12,5 X 1,6	22 01 500		
28	Hexagonal nut; M6	21 01 304		
o.P.	Back panelling, complete	80000733		



GS 41/4 (S)

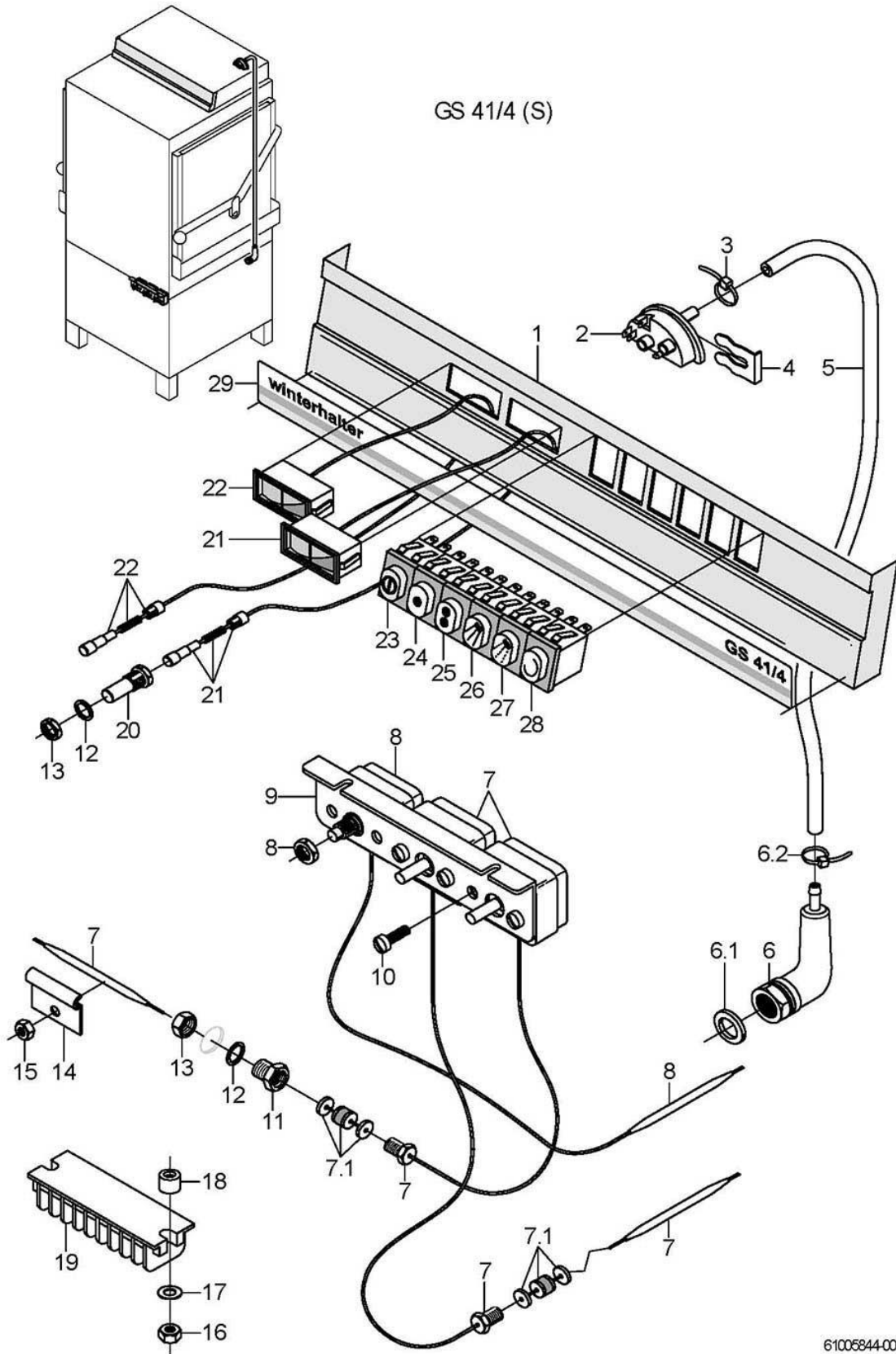


61005843-00

GS 41/4; GS 41/4S**Door**

Item.	Designation	Parts no.:	Pc.	Notes
1	Door lever cpl.	61002563		incl. item 1.1 - 1.9
1.1	Collar; D36 X D23	23 05 002		
1.2	Hexagonal nut; M8	21 02 303	4	
1.3	Spring connector; D12 X 80	61002522	2	
1.4	Door lever screw; M8 X 23	20 18 262	2	
1.5	Draw lever	61002310	2	
1.6	Hexagonal nut; M8	21 01 305	2	
1.7	Cap black; D19,6 X 22 X 1,5	35 03 004	2	
1.8	Threaded stud; M8 X 25	20 30 002	2	
1.9	Threaded stud; M8 X 25	20 30 002	2	
2	Door lever bearing; 70 X 21 X 39,25	35 01 066		
3	Washer; D6,4 X D12,5 X 1,6	22 01 302		
4	Hexagonal nut; M6 SELBSTSICHERND	21 05 304		
5	Bracket; 1,5 X 52 X 62	61000733		
6	Limit switch	80003235		
7	Pan head screw; M4 X 25	20 10 215		
8	PG9 cable gland; PG9; 4-8 MM; IP68	31 10 042		
9	Tension spring; L0=345;L1=445;F1=300N	28 04 001		
10	Link chain; D3	28 15 008		530mm; "By-the-metre" goods
11	S-hook; D5,0 X 45	28 15 009		
12	Door cpl.; 26 X 500 X 579	61002564		incl. item 12.1 - 12.3
12.1	Cover; 9 X 25 X 60	35 01 162	2	
12.2	Washer; D5,3 X D12 X 0,8	22 02 313	2	
12.3	Hexagonal nut; M4	21 01 302	2	
13	Trough left cpl.; 81,5 X 103 X 627,5	61002846		
13	Trough cpl. GS 41/4 corner; 596,5 LG	61002847		GS 41/4 (S) Corner
13	Trough right cpl.; 81,5 X 103 X 627,5	61002854		
14	Cap nut; M5	21 10 303		
15	Slide rail right; 497 LG	55 15 080		incl. item 15.1 - 15.2
15.1	Sliding rail; 18,3 X 19,7 X 492 LG	61004175		
15.2	Sheet metal screw; ST 2,9 X 6,5	20 20 308		
16	Slide rail left; 497 LG	55 15 081		incl. item 16.1 - 16.2
16.1	Sliding rail; 18,3 X 19,7 X 492 LG	61004175		
16.2	Sheet metal screw; ST 2,9 X 6,5	20 20 308		
17	Baffle plate	55 15 024		incl. item 17.1 - 17.2
17.1	Hexagonal nut; M6 SELBSTSICHERND	21 05 304	4	
17.2	Buffer; D20 X 25; M6 X 18	40 06 004	2	
18	Spring washer; B4	23 03 304		up to 05/92
18	Spring washer; B5	23 03 302		from 06/92
19	Dome head nut; M4	21 10 302		up to 05/92
19	Cap nut; M5	21 10 303		from 06/92
20	Hex bolt; M6 X 12; A70	20 01 321		

GS 41/4 (S)

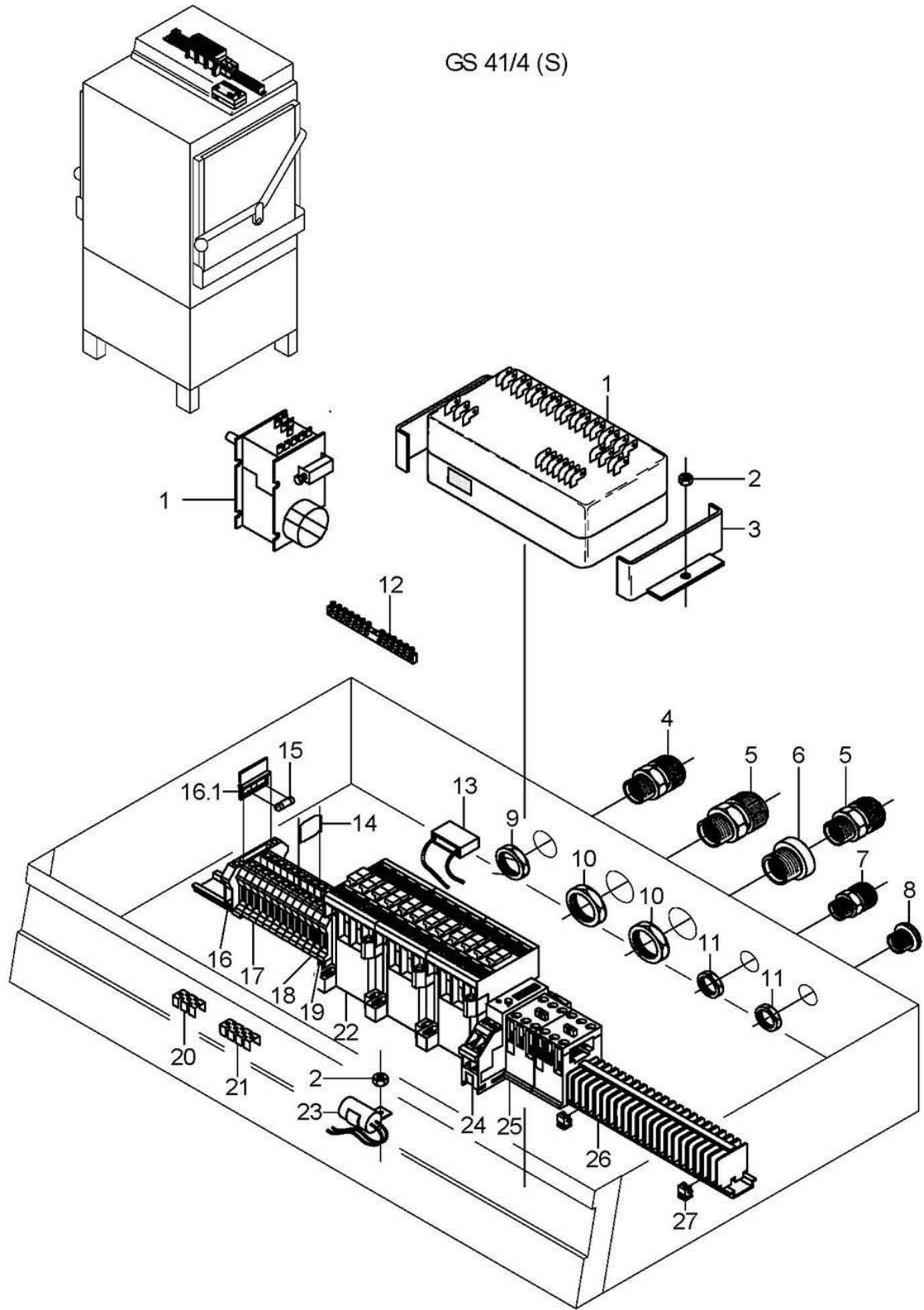


61005844-00

GS 41/4; GS 41/4S**Electrical parts I**

Item.	Designation	Parts no.:	Pc.	Notes
1	Front screen; 20 X 108 X 530	61002069		order too: 60001965
2	Level control; 250V/50-60HZ	31 26 003		
3	Wire hose clamp; D8,6 X 1	28 02 348		
4	Retaining spring for leveller	31 26 001		
5	Hose; DN5 X 1,5	40 01 024		850 mm; "By-the-metre" goods
6	Air chamber cpl.	55 04 024		incl. item 6.1 - 6.2
6.1	Gasket; D26 X D36 X 2,0	27 01 003		replaced by 55 04 024
6.1	O-ring; 24 X 3,0	27 07 087		
6.2	Wire hose clamp; D8,6 X 1	28 02 348		
7	Thermostat; 1750 LG; 220V	31 25 013		incl. item 7.1
7.1	Gland screwing	31 25 012		
8	Safety thermostat; 98+/-4 GRAD AUS	31 25 022		to machine no.: 218 999
8	Safety thermostat; 160 GRAD C -12K "AUS"	31 25 030		From machine no.: 219 000
9	Thermostat bracket; 1,0 X 83 X 120	61003390		GS 41/4S: From machine no.: 10 222
9	Thermostat bracket; 1,0 X 83 X 120	61003390		GS 41/4: From machine no.: 219 000
10	Raised head screw; M4 X 8	20 10 310		
11	Gland for thermostat; M14 X 1,0 X 15; SW19	31 25 001		
12	Gasket; D14,2 X D20 X 2,0	27 09 036		
13	Hexagonal nut; M14 X 1,0 X 5,0	31 25 002		
14	Thermostat clamp; 0,8 X 28 X 50	55 19 011		
15	Hexagonal nut; M4	21 01 302		
16	Hexagonal nut; M4 SELBSTSICHERND	21 05 300		
17	Washer; D5,3 X D10 X 1,0	22 01 300		
18	Spacer; D5,3 X D12 X 7	22 08 513		
19	Terminal strip; 9-POLIG	31 09 155		
20	Gland for thermometer; M14 X 1,0 X 35,5; SW19	32 01 030		
21	Thermometer 58 degrees; MESSLEITUNG 2500 LG	32 01 035		
22	Thermometer 85 degrees; MESSLEITUNG 2500 LG	32 01 036		
23	Pressure switch "ON/OFF" - "V"; 250V; AC; 2-POL; IP54	31 24 186		
24	Pressure switch -Progr. 1-; 250V; AC; 2-POL; IP54	31 24 165		
25	Pressure switch "progr. II"; 250V; AC; 2-POL; IP54	31 24 166		
26	Pressure switch "manual wash"; 250V; AC; 2-POL; IP54	31 24 128		
27	Pressure key "manual rinsing"; 250V; AC; 2-POL; IP54	31 24 129		
28	Wash cycle lamp; 230V; AC; IP54	31 08 064		
29	Strip label GS 41/4; 0,4 X 25 X 521	60001695		
29	Strip label GS 41/4S; 0,4 X 25 X 521	61002486		

GS 41/4 (S)



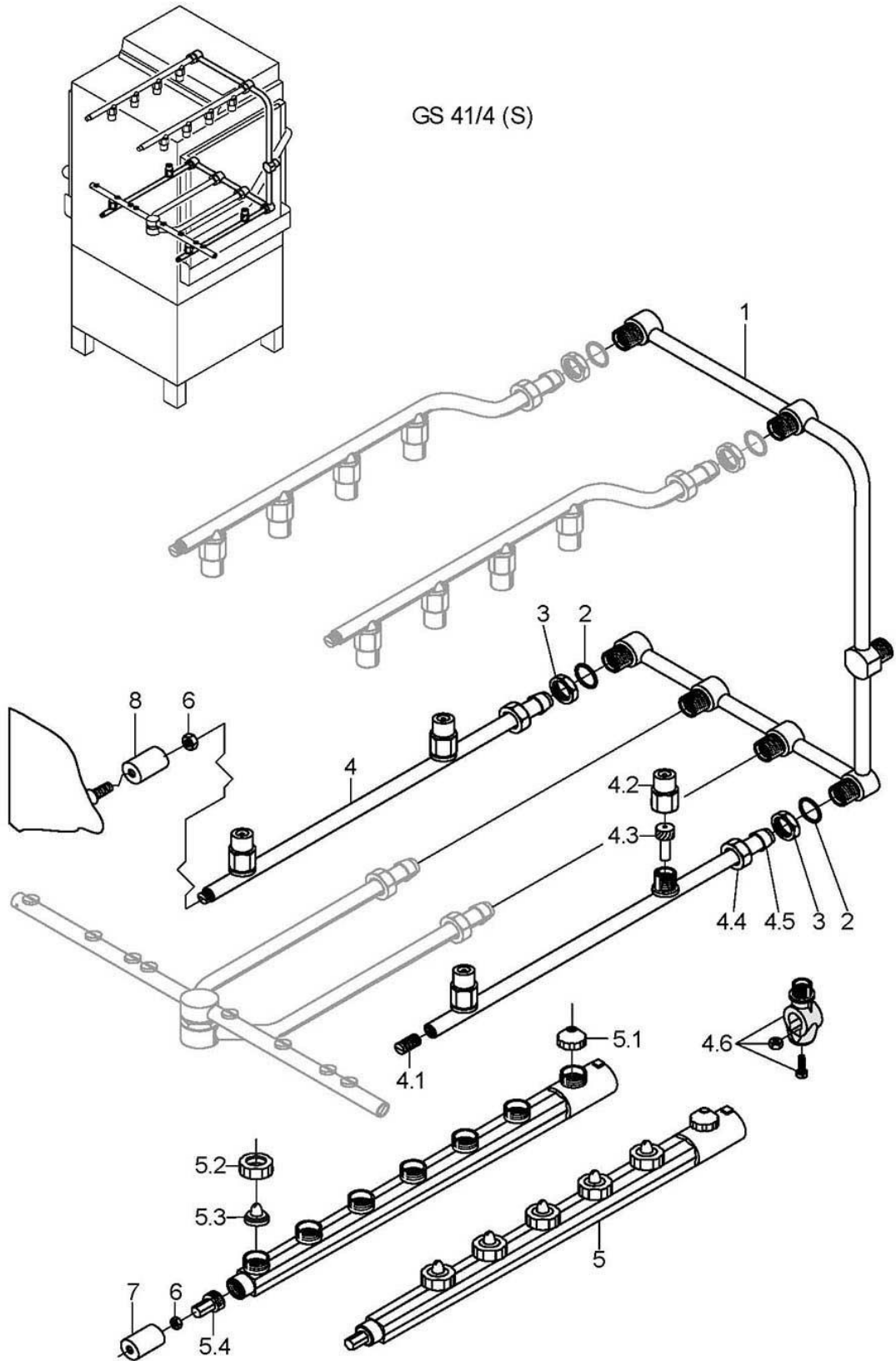
61005845-00

GS 41/4; GS 41/4S

Electrical parts II

Item.	Designation	Parts no.:	Pc.	Notes
1	Programme switch	31 05 119		GS 41/4: to machine no.: 199 659
1	Programme switch	31 05 119		GS 41/4S: to machine no.: 10 221
1	Programme switch EPS1.1; 230V/50-60HZ	31 05 131		GS 41/4: From machine no.: 199 660
1	Programme switch EPS1.1 V2.0; 200V/240V 50-60HZ	31 05 132		GS 41/4: From machine no.: 199 660
1	Programme switch EPS1.1; 230V/50-60HZ	31 05 131		GS 41/4S: From machine no.: 10 222
1	Programme switch EPS1.1 V2.0; 200V/240V 50-60HZ	31 05 132		GS 41/4S: From machine no.: 10 222
2	Hexagonal nut; M4 SELBSTSICHERND	21 05 300		
3	Bracket; 1,25 X 53,75 X 101,5	61003088		GS 41/4: From machine no.: 199 660
3	Bracket; 1,25 X 53,75 X 101,5	61003088		GS 41/4S: From machine no.: 10 222
4	Cable gland; PG16; 10-14 MM; IP68	31 10 049		
5	Cable gland; PG21; 10-18 MM; IP68	31 10 070		
6	Reducing ring; KUK 21/16	31 10 090		
7	PG9 cable gland; PG9; 4-8 MM; IP68	31 10 042		
8	Hexagon bolt; PG9	31 10 021		
8	Hexagon bolt; PG16	31 10 025		
8	Bushing socket	31 10 105		
9	Hexagonal nut; PG16; SW30;	31 10 110		
10	Hexagonal nut; PG21	31 10 071		
11	Hexagonal nut; PG9	31 10 043		
12	Earth terminal bar	31 09 094		
13	Rc-member; 0,27 MICRO F; 220 OHM	60000990		with plug-in bush
14	Isolating disk	31 09 066		
15	Fine fuse, medium time lag; 250V; 6,3A; 5 X 20	31 11 043		
16	Universal fuse clip	31 09 063		incl. item 16.1
16.1	Securing plug	31 09 072		
17	Universal terminal grey	31 09 057		
18	Universal terminal blue	31 09 058		
19	Universal terminal green/yell.	31 09 059		
20	Fixed bridge; 3-POLIG; FB 3-8	31 09 138		
21	Fixed bridge; 4-POLIG; FB 4-8	31 09 148		
22	Contact; A9-3S-1Ö; 230V/50-60HZ; 4KW	31 04 161		
22	Contact; A16:3S: 1 N/C contact; 230V/50-60HZ; 7,5KW	31 04 162		
22	Contact; A16:3S: 1 N/C contact; 200V/50-60HZ; 7,5KW	31 04 163		
23	Radio interference suppression capacitor; 0,1 + 2 X 0,01 MIKRO F	31 13 071		
24	Wipe contact flick contactor; 1 - 10 SEC; 220V	31 04 120		GS 41/4S: to machine no.: 10 221
24	Wipe contact flick contactor; 1 - 10 SEC; 220V	31 04 120		GS 41/4: to machine no.: 199 659
25	Mini contactor; 220V/50-60HZ; 240V/60H	31 04 114		GS 41/4: to machine no.: 199 659
25	Mini contactor; 220V/50-60HZ; 240V/60H	31 04 114		GS 41/4S: to machine no.: 10 221
26	Terminal strip 21-fold	55 19 074		
27	Retaining clips	31 09 012		

GS 41/4 (S)



61005846.00

GS 41/4; GS 41/4S**Glass washing kit (Option)**

Item.	Designation	Parts no.:	Pc.	Notes
1	Rinse manifold	61004239		
2	O-ring; 16 X 2,5	27 07 001		
2	Gasket; D17 X D24 X 2,0	27 09 009		
3	Hexagonal nut; G 3/8" X 5,5; SW22	30 09 200		
4	Rinse pipe cpl.	80000128		incl. item 4.1 - 4.6
4.1	Threaded pin; M9 X 40	20 30 502		
4.2	Spray jet cap; D14,6 X 21	65002765	2	
4.3	Spray jet swirl; D8 X 18,8	65002764	2	
4.4	Union nut; G 3/8" X D10,2; SW22	29 07 200		
4.5	Cutting ring; D13 X 10; DN10	29 07 303		
4.6	Jet bottom part; D18 X 36; M11 X 1,0	55 10 008		GS 41/4: to machine no.: 332 001
4.6	Jet bottom part; D18 X 36; M11 X 1,0	55 10 008		GS 41/4S: to machine no.: 12 959
5	Wash arm with jets; 7 DÜSEN, 564 LG	61004519		incl. item 5.1 - 5.4
5.1	Jet cap; G 3/4";	61004518		
5.2	Coupling nut for wash jet; G 3/4" X D16	62001808	6	
5.3	Slotted jet; D20,5 X 16,56	65003150	6	
5.4	Wash arm plug; G 1/2" X 37	35 01 210		
6	Hexagonal nut; M4 SELBSTSICHERND	21 05 300		
7	Guide for washarm; D28 X 30	61002263		
8	Guide socket for rinse arm; D28 X 30	61002343		